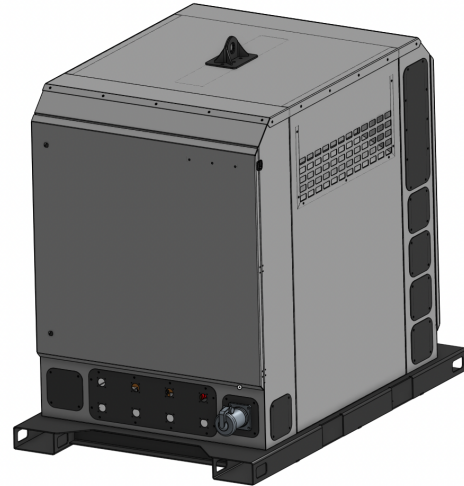


Model SBP-300-XFMR



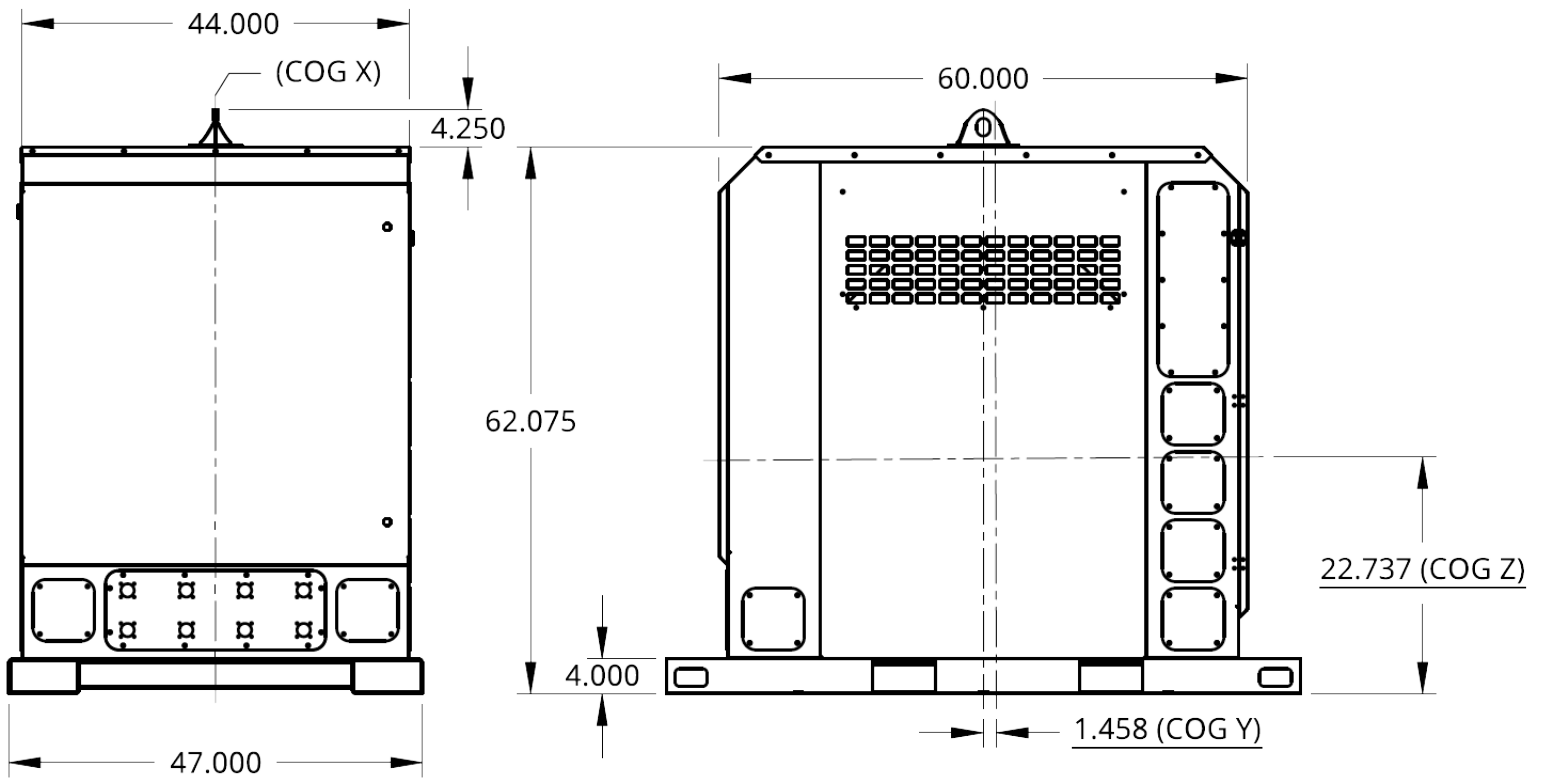
FEATURES

<ul style="list-style-type: none"> • Prototype & Production Tested Design • Wide range of options and accessories available 	<p>Transformer</p> <ul style="list-style-type: none"> • 3 Phase Isolation Transformer, Aluminum, Self cooled (ANN/AN) • Canada - (NRCAN 2019) SOR/2018-201, Amd. 14 & ON Reg. 404/12, U.S. - (DOE 2016) DOE 10 CFR Part 431) • Sound Level meets NEMA ST-20 • CSA Certified - File # LR34493 (5kV Max, 900kVA Max) • UL Listed - File # E108255 (600V Max, 750kVA Max) • 150°C Temperature Rise • 220°C Insulation Rating
<ul style="list-style-type: none"> • Simple access for maintenance and operations • Weatherproof enclosure with NEMA 3R compliance • Safety guards for all electrical connections • Tooled latches standard • All parts powder coated or galvanized or aluminum • Single point lifting bail system, engineered and rated 	<ul style="list-style-type: none"> • Switchable voltage design 480/600 primary switch reduces labour and easily allows connection between 480V generators and 600V utilities without having to change your power distribution.
<ul style="list-style-type: none"> • All components used are listed, UL489-rated transformer protection built into the assembly - connect to most common power systems safe and quick. • Power distribution system is customizable with Eco Power Equipment gland system. 	<ul style="list-style-type: none"> • Rugged base frame and enclosure for mobile applications, ready for standard width pallet jack to allow quick placement

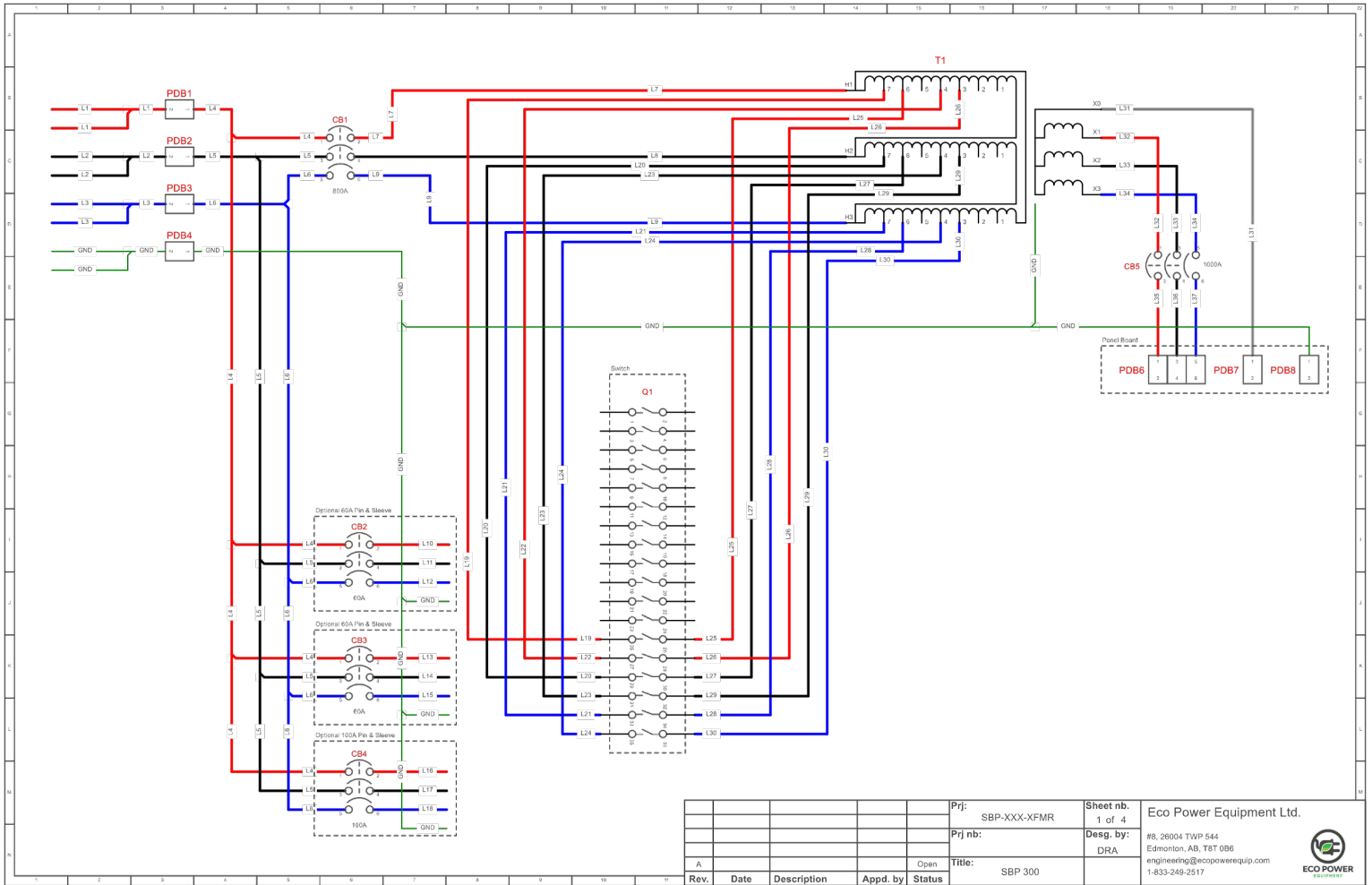
UNIT SPECIFICATIONS

kVa Rating	300
Primary Voltage	600/480 DELTA
Secondary Voltage	120/208 Y
Full Load Primary Amps @ 600V Three Phase	288.7
Full Load Primary Amps @ 480V Three Phase	360.8
Full Load Secondary Amps @ 208V Three Phase	832.7
Impedance	4% - 6%
Efficiency (35% load, 75 OC)	99.02%
AverageSoundLevel[dB]	55
Primary Taps Available	480V, 570V, 585V 600V, 615V, 630V
Enclosure Type	Type 3R Outdoor
Primary Side Distribution Type	2 x 400A Cam Lock or Hard Wire
Primary Side Splitter	Yes
Primary Side Distribution Plugs	60 or 100 Amp Pin and Sleeve (pending configuration)
Secondary Side Power Distribution Type	1200 Amp I-Line
Secondary Side Circuit Max Capacity	36
Secondary Side Breaker Type	BD, BG, BJ, BK, QB, QD, QG, QJ
Secondary Side Circuit Max Capacity	36
Primary Protection	800 Amp MCCB, 0.8 Adjustable, UL 489
Secondary Protection	1200 Amp MCCB, 0.8 Adjustable, UL 489
Eco Power Gland Capacity	8
Length [INCHES]	72
Width [INCHES]	47
Height [INCHES]	68
Weight [LBS]	3500 lbs
Compliance / Approvals	SPE-1000, UL1640 Compliant Design, CSA standards 22.2 No. 5, UL 489, IEC/EN 60947-2, CE Compliant

DIMENSIONS



BASE WIRING DIAGRAM



©2023 Eco Power Equipment Ltd. All rights reserved. All specifications are subject to change without notice